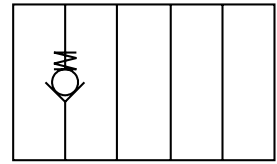


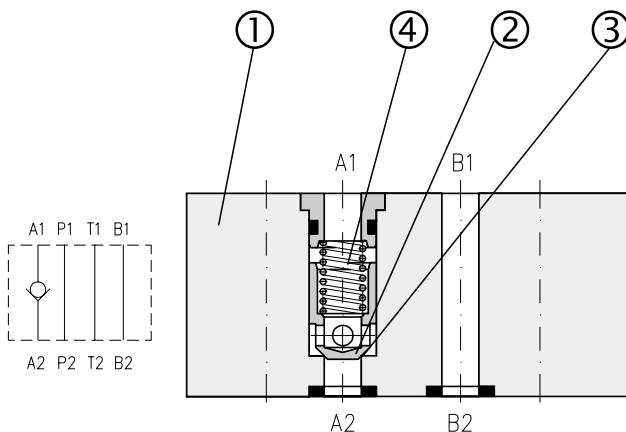
- Sandwich plate design for use in vertical stacking assemblies
- Poppet design
- Leakfree closure of one or two service ports, as required
- Eight different check variations
- Installation dimensions to ISO 4401 CETOP - RP 121H and NFPA T3.5.1 - D 02



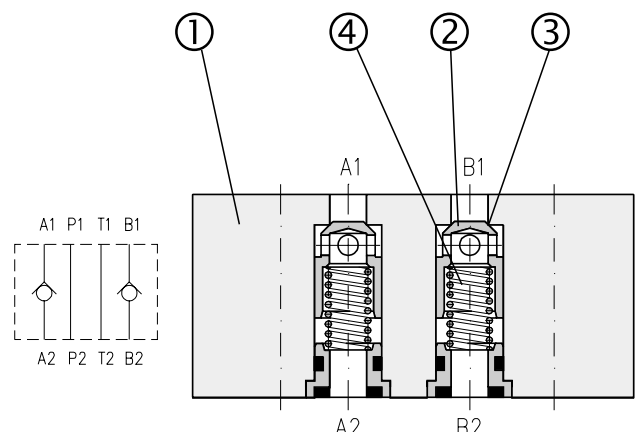
## Functional Description

The check valves sandwich plate are used to allow flow in one direction and prevent flow in the other in the port in which the check element is installed. The sandwich design enables stacking with other components of the same size. The check elements are built into one or two ports, the other ports being through-holes. The seat (3)

is machined directly in the housing (1) and the poppet (2) is pushed onto the seat by the compression spring (4). The cracking pressure depends on the spring selected and the pressurised poppet surface area. The valve housing surface is phosphate coated.



Model A



Model D

# Order Code

**VJO1-04/M**  -

Check valves sandwich plates

Valve size

**D 02 (04)**

Sandwich plate design

omit  
**V**

**Seal**  
NBR  
FPM (Viton)

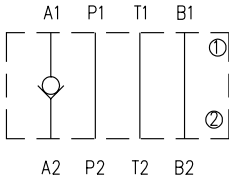
**05**  
**15**  
**30**

**Cracking pressure**

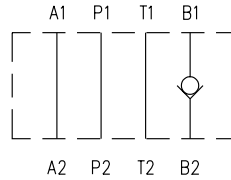
7 PSI (0.5 bar)  
22 PSI (1.5 bar)  
43 PSI (3.0 bar)

## Model

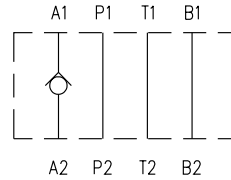
**A**



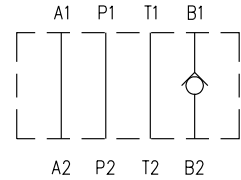
**B**



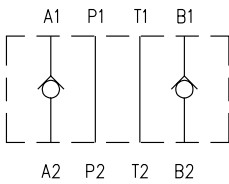
**E**



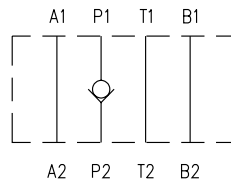
**F**



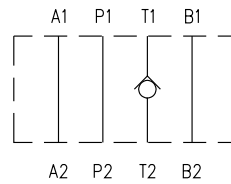
**D**



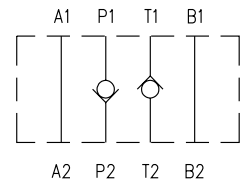
**P**



**T**



**H**



**Notes:** Symbol orientation on the label corresponds with the valve function.

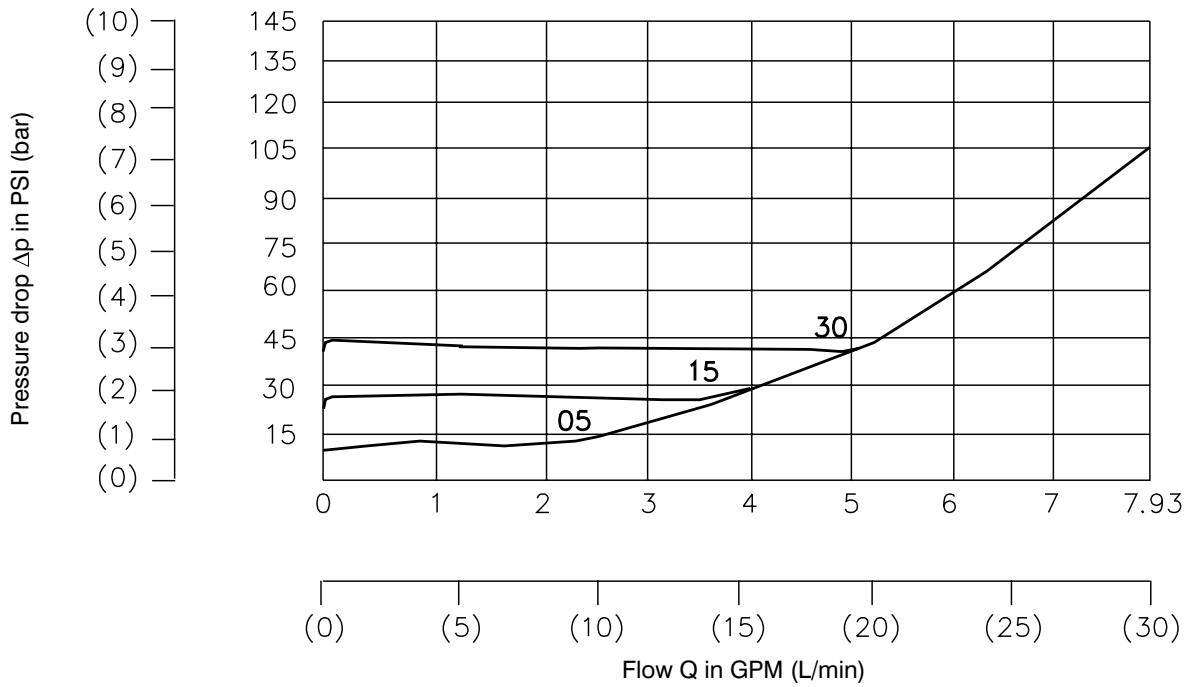
- ① valve side
- ② subplate or manifold side

## Technical Data

Valve size	US (mm)	D 02 (04)		
Maximum flow	GPM (L/min)	7.94 (30)		
Maximum operating pressure	PSI (bar)	4600 (320)		
Cracking pressure	PSI (bar)	7 (0.5)	0.4 (1.5)	0.8 (3)
Hydraulic fluid		Petroleum oils (HM, HL, HLP) Phosphate ester fluids (HFD-R)		
Fluid temperature range for standard sealing (NBR)	°F (°C)	-22 ... +176 (-30 ... +80)		
Fluid temperature range for Viton seals (FPM)	°F (°C)	-4 ... +176 (-20 ... +80)		
Viscosity range	SUS (mm <sup>2</sup> /s)	98 ... 1840 (20 ... 400)		
Maximum degree of fluid contamination		Class 21/18/15 to ISO 4406 (1999).		
Weight	lbs (kg)	0.879 (0.40)		
Mounting position		any		

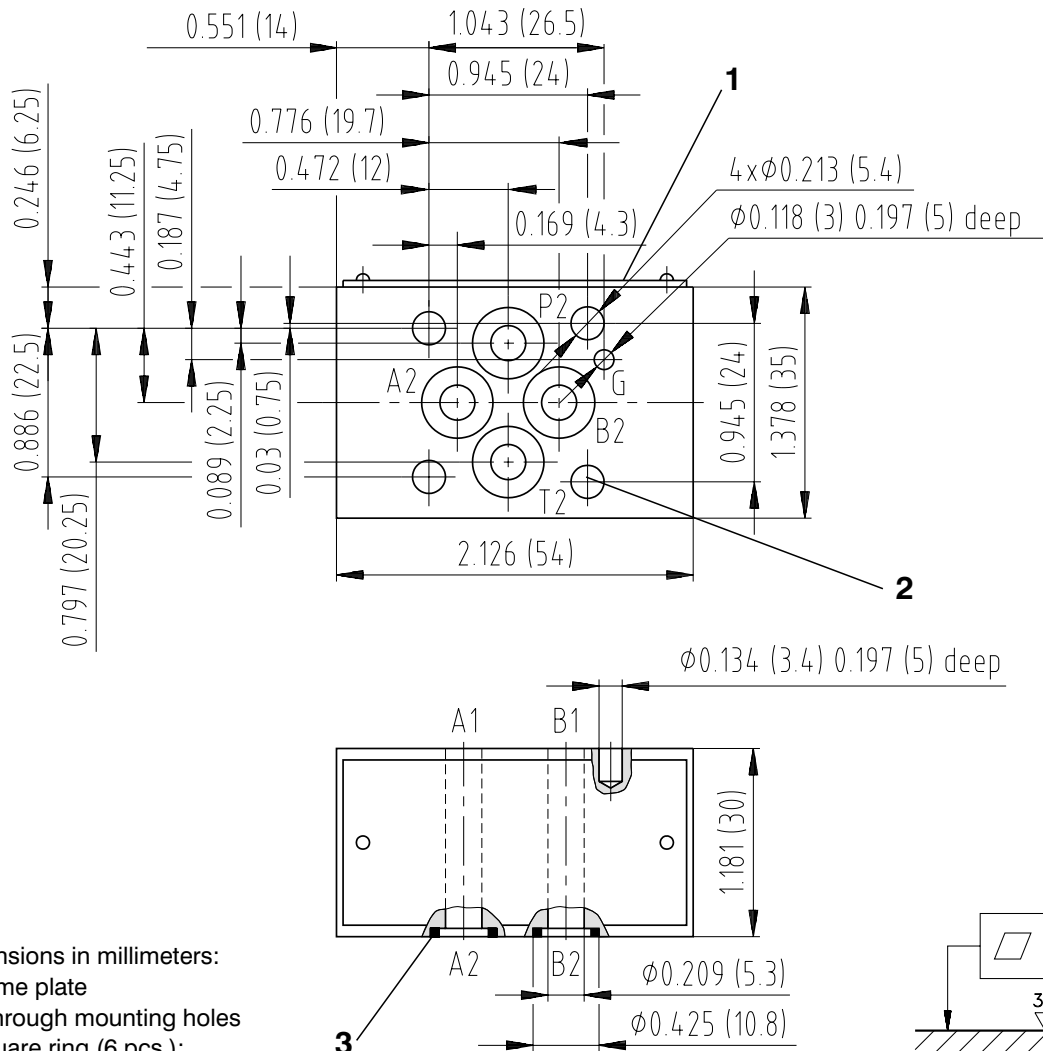
# Δp-Q Characteristic

Measured at  $v = 166 \text{ SUS } (35 \text{ mm}^2/\text{s})$  and  $t = 104^\circ\text{F } (40^\circ\text{C})$

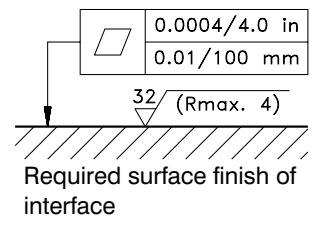


# Valve Dimensions

Dimensions in inches and millimeters (in brackets)



- Dimensions in millimeters:
- 1 Name plate
  - 2 4 through mounting holes
  - 3 Square ring (6 pcs.):  
standard (NBR) - SR 010 6.07 x 1.68  
Viton (FPM) - 6.07 x 1.78  
supplied with valve





**Spare Parts**

Dimensions in millimeters

**Seal kit**

Type	Dimensions, quantity		Order number
	Square ring	O-ring	
Standard NBR	6.07 x 1.68 (6 pcs.)	-	530-0197
Viton	-	6.07 x 1.78 (6 pcs.)	530-0204

**Notes:**

- The plastic packaging is recyclable.
- Mounting studs must be ordered separately. For stud kits see data shet HU 0020.
- Certified documentation is available per request.



**ARGO - HYTOS INC.**

P.O. Box 28; Bowling Green; Ohio 43402  
 Phone: 419-353-6070; Fax: 419-354-3496  
[info.us@argo-hytos.com](mailto:info.us@argo-hytos.com); [www.argo-hytos.com](http://www.argo-hytos.com)

